

# LABO 340 PRO-ACTIVE

according to DIN 13277

## Equipment

- 4 shelves and 1 drawer
- Forced-air cooling
- Key switch
- Comfortable access
- Automatic defrosting
- Digital temperature display
- Condensate evaporation
- Potential-free contact
- Antifreeze
- Visual and audible alarm signal, even in the case of power failure
- Minimum/maximum temperature memory



## PRO-ACTIVE-Features

- Faster response time in the event of impending faults thanks to proactive alarms
- Data recording can be read out via USB interface using a USB stick and software
- Minimisation of temperature deviations in the interior
- Maximum storage safety thanks to harmonised components

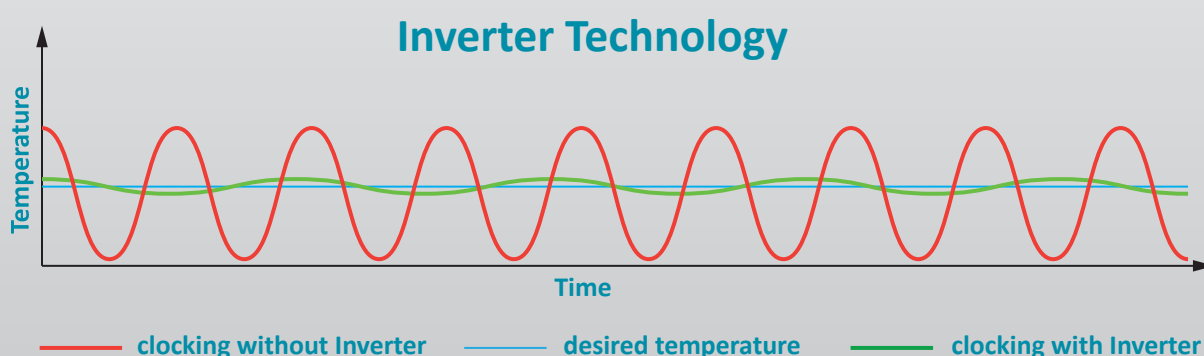


## Compressor with inverter technology

- Environmentally friendly natural refrigerant R600a.  
Very low GWP value = 3 (Global Warming Potential)
- Reduction in power consumption by 29 % compared to the previous model (power consumption = 0.46 kWh/24h)
- Extended service life due to demand-orientated power adjustment
- Frequency: 50/60 Hz

If you need further support or have any questions, please contact us.

**info@kirsch-medical.de**  
**+49 (0)781 - 9227 0**



- **PRO-ACTIVE- Control:** Permanent, proactive monitoring of the performance data and alerts in the case of deviations – so that you can take countermeasures in good time before a fault threatens your chilled goods; world's most accurate temperature control in refrigerated areas thanks to two standard PT-1000 sensors.
- **External housing** made from galvanised sheet steel (rust-proof), with white, anti-scratch powder coating. Length of the plug cable: approx. 2.8 m.
- **Adjustable feet** to compensate uneven floors.
- **Interior made from** smooth aluminium with colourless protective coating. Gibs (every 15mm) for flexible interior arrangement.
- **Interior** can be customised (surcharge may apply). See optional equipment.
- **Extra-thick energy saving insulation**, made from high-quality, compression-moulded and environmentally friendly material.
- **Self-closing door** with easy-to-replace plastic magnetic seal frame, lockable.
- **Door hinge** on the right-hand side (by default, see illustration), or the left-hand side, can be retrofitted.
- **Forced-air cooling**, switches off automatically when you open the door, ensures a uniform temperature and minimizes temperature deviations.
- **Automatic defrosting** with time limit and temperature monitoring.
- **Condensate evaporates** in the refrigerating machine interior.
- **Key switch** protected control panel against tampering. Membrane keyboard with digital temperature display and minimum/maximum temperature memory.
- **Warning functions** with visual and audible alarm signal in the case of temperature deviations or other malfunctions. Door open alarm after 60 seconds.
- **Power failure alarm** (visual and audible alarm), the monitoring unit remains in operation for approx. 30 hours on battery power.
- **Alarms** can be forwarded using a potential-free contact (e.g., to a mobile phone with optional KIRSCH EVOLUTION CLOUD or to a control centre).
- **Data documentation** can be read via USB interface with KIRSCH Datanet software.
- **Antifreeze** against sub-zero temperatures.
- **Statically ventilated refrigerating machine**, hermetically sealed, energy saving, low-noise, easy to service.
- **Low-noise compressor** reduces noise.

## Specification

Capacity	330 litres
Temperature setting	approx. +0 °C to +15 °C
Voltage	220 – 240 V, 50/60 Hz
Power consumption	38.5 watts
Normal consumption	0.46 kWh/24 h
Admissible ambient temperature	from +10 °C to +38 °C
Heat emission (max.)	152 watts
Exterior dimensions (including door handle and distance from wall)	w x d x h = 67 x 66 x 189 cm
Useable dimensions	w x d x h = 52.7 x 39 x 116 cm
Exterior dimensions with door open at 90°	w x d = 67 x 124 cm
Shelf size	w x d = 53 x 39 cm
Max. load shelf	16 kg/40 kg
Weight	Net weight 90 kg, gross weight 104 kg
Temperature deviation	+/-0,27 °C
Noise emission	38.6 dB(A)

## Optional equipment

KIRSCH refrigerators and freezers offer numerous equipment options that can be retrofitted.



### Glass door with lock

See clearly: avoid opening the door unnecessarily to inspect the contents.



### Decorative frame

Made of stainless steel, allows to cover door with a decorative panel (thickness max. 2 mm).



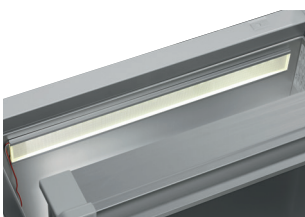
### Plastic-drawer on roller runners

Up to 12 drawers are possible in total.



### Additional length and cross dividers

for the optimum organisation of your refrigerated goods.



### Interior lighting side wall

Optional, optimised and energy-efficient illumination of the interior via LED light strip.



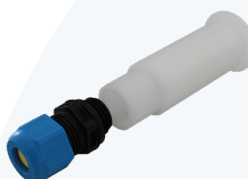
### Additional Shelves

Wire shelves, robust with load capacity up to 40 and 50 kg.



### Vario Support

Storage shelf on castors.



### Access Port

Simple insertion of an external temperature sensor with integrated cable feed-through.



### Door coupling

Connects the furniture door to the device.



### Castors

Can be equipped with steering and fixed castors.





#### Condensation tray

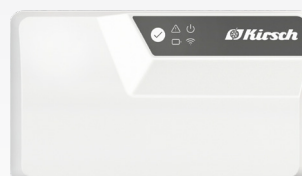
for manual disposal of condensation water.

## Accessories for temperature documentation



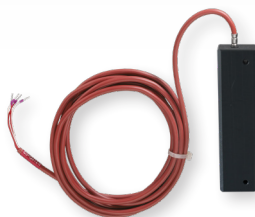
#### PC-KIT-NET

Automatic temperature documentation and monitoring via your network (LAN connection).



#### KIRSCH EVOLUTION CLOUD-Module

Maximum storage safety through optimal connectivity and real-time monitoring.



#### External PT100/PT1000 with cold block

Additional temperature sensor for connection to existing/external monitoring system.



#### Circular blade temperature recorder

Depending on the model, it is either installed in the machine compartment panel of the refrigerator or freezer or integrated into an additional housing attachment.

\* For more information about our cloud, please contact us.



#### Philipp Kirsch GmbH

Im Lössenfeld 14  
77731 Willstätt  
Germany

Phone: +49 (0) 781 9227-0  
Telefax: +49 (0) 781 9227-200  
info@kirsch-medical.com

[www.kirsch-medical.com](http://www.kirsch-medical.com)



Photograph this QR code  
and learn  
about our entire  
product range.