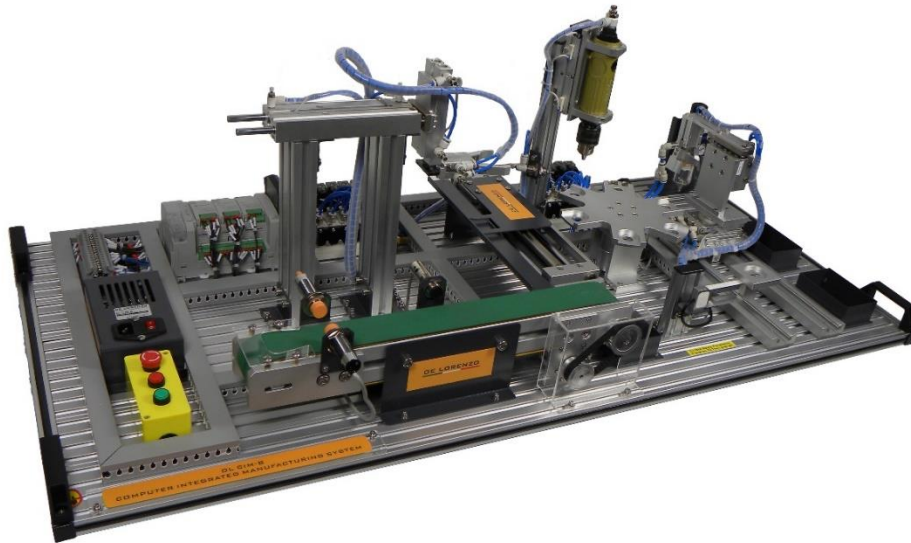




CIM



## COMPUTER INTEGRATED MANUFACTURING TRAINER



### DL CIM-B

CIM (computer integrated manufacturing) is a manufacturing method, in which the entire production process is controlled by computer. This manufacturing method includes transversal applications in several didactic areas such as automation, pneumatics, electronics, mechatronics and process control.

De Lorenzo has developed station-based training systems, which allow the student to view a specific manufacturing process of an industrial production line. The trainer is a closed-loop control system based on PLC that exchanges information collected from sensors.

The version **DL CIM-B** integrates Conveyor belt, Linear Transfer unit, Pick and Place unit, six stations rotary table, drilling module, uploading arm, and weighing module.

#### TRAINING OBJECTIVES

DL CIM-B focuses on the study of the integration of the industrial sensors in process inspection as a support for manufacturing processing line.

The trainer integrates the typical actuators (electric, pneumatic) into process executions. The performances of the actuators influence the quality of industrial automation functions. Together with the sensors, they ensure and multiply the value of manufacturing processes.

To study the components substations functionalities: linear transfer unit, horizontal transfer unit, pick and place unit, six stations rotary table, drilling module, uploading arm, and weighing module.

**Ideal for 4 students to work simultaneously.**

Vocational and technical schools.

And applicable to courses in:

- **Automation**
- **Electronics**
- **Mechatronics**
- **Electro pneumatics and Process Control**

## TECHNICAL SPECIFICATIONS

- Power supply: single phase by the mains.
- Power: 450W, 2A fuse on socket for overload and short circuit protections.

The DL CIM-A trainer is available in two versions depending on the PLC integrated in the system:

- **DL CIM-B\_1200** with Siemens PLC  
S7-1200 series  
CPU 1214C and SM1223 DI8/DO8
- **DL CIM-B\_AB** with Allen Bradley PLC  
CPU 2080-LC30-24QVB  
Expansion module 2080-IQ4OV4 x2

A third version is also available which adds an HMI and SCADA software to the DL CIM-A with PLC Siemens:

- **DL CIM-BS\_7INCH** with 7 inch HMI
- **DL CIM-BS\_10INCH** with 10 inch HMI

The CIM system is also available with an open terminal block instead of the PLC. This version allows the connection of an external controller through the 2mm terminals. For the correct operation of the system, it is recommended to use a PLC with similar or improved characteristics (INPUT/OUTPUT) as the ones provided with our standard versions (see previous notes).

Order code: **DL CIM-BT**

## HIGHLIGHTS

The trainer is a real application of industrial sensors and actuators, programmable logic control (PLC), and dedicated information and computer technologies (ICT-s).

All training topics are designed for CIM applications understanding. The sensors are a support for inspections and manipulation, the actuators run process and the PLC monitors and controls manufacturing algorithms adjusting the processes variables.

It is the basic study of Flexible Manufacturing Systems, with benefits in increasing the machines utilization, reducing the manufacturing leading time, and ensuring high flexibility scheduling.

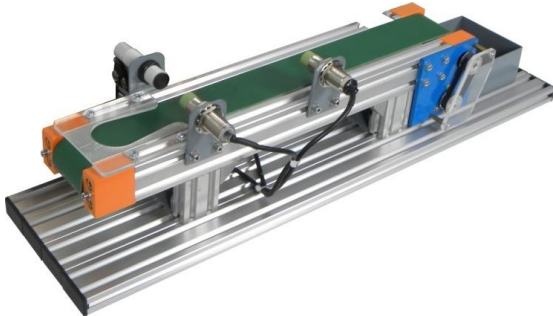
The following table shows the details of the models available with ordering code.

	TERMINAL BLOCK	PLC SIMENS	PLC ALLEN BRADLEY	TOUCH PANEL 7INCH	TOUCH PANEL 10INCH	SCADA SOFTWARE
DL CIM-BT	✓					
DL CIM-B_1200		✓				
DL CIM-B_AB			✓			
DL CIM-BS_7INCH		✓		✓		✓
DL CIM-BS_10INCH		✓			✓	✓

**Note:** A compressor is needed (no less than 0.6Mpa). Module suggested: **DL 8110SLZ**



## SUBSTATIONS DETAILS



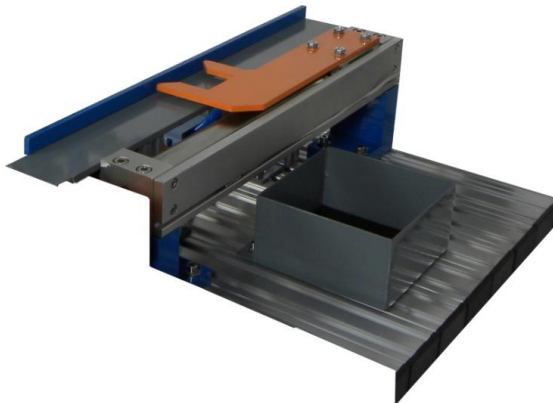
### CONVEYER UNIT

This is a miniature model of a real time industrial conveyor system, driven by a DC motor.

The operation of the conveyor is limited to single direction according to the usage.

The conveyor belt rolls over two pulleys fixed on either end. The pulleys roll freely and maintain a free movement for the belt.

- Length: 480 mm.
- Width: 50 mm.

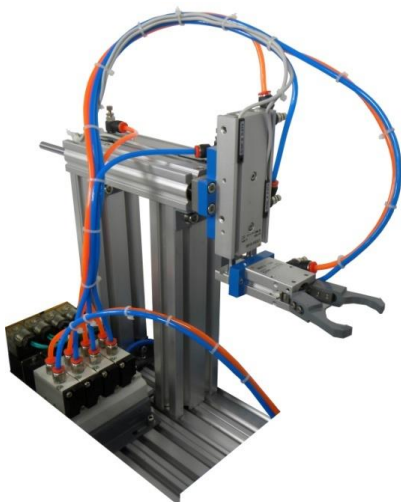


### LINEAR TRANSFER UNIT

The Linear Transfer Unit is an electro-pneumatic controlled linear actuator. Magnetic switches are fixed to sense the retracted and extended position of the transfer unit.

It transfers materials from the conveyor with the help of a pneumatically operated rod less double acting cylinder.

- Cylinder: Pneumatic rod less (20 mm diameter, stroke length 200 mm).
- Travel length: 200 mm.



### PICK AND PLACE UNIT

It is a totally electro-pneumatic control system. There are three main parts in this unit:

- a vertical arm (double acting cylinder),
- a horizontal arm (double acting cylinder), and
- an angular gripper (double acting angular gripper for holding work pieces).

Magnetic switches are fixed to sense the retracted and extended position of the vertical and horizontal arms; so, the Pick & Place Unit transfers the material from the Linear Transfer Unit end to the next Unit with the help of the vertical arm, the horizontal arm, and the angular gripper.

- Vertical travel: 50 mm.
- Horizontal travel: 125 mm.
- Load Capacity: 0.5Kg.



## CONTROL SYSTEMS: SIEMENS AND ALLEN BRADLEY PLCs

There are programmable controllers that combine high performance and ease of use.

Their main advantages are:

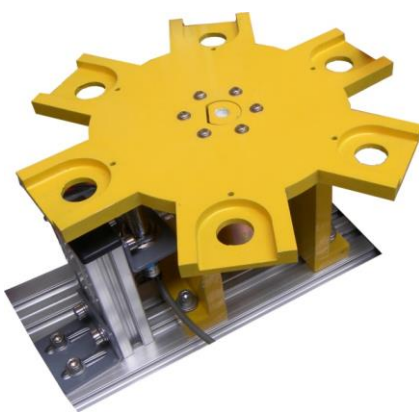
- the flexibility, as they can be reprogrammed,
- the possibility of their use in environments with severe working conditions,
- the reliability and safety, and
- the possibility of processing both digital and analogue signals.



With these controllers integrated into the system, the students can perform experiments commonly used in the industrial automation environment.

Each type includes 22 digital inputs, 18 digital outputs, and 2 analogue inputs.

They can be programmed through the integrated Ethernet port with TIA portal software (for Siemens PLC) and through USB port with CCW (Connected Components Workbench) software (for Allen Bradley PLC).



## SIX STATIONS ROTARY TABLE

A Six Stations Rotary Table (also known as Rotary Indexer Supplier) consists of a horizontal circular worktable, on which the work piece is placed to be processed.

The worktable is indexed to present each work piece to each work head to accomplish the sequence of machining operations.

The control and driver use electrical energy.



## DRILLING MODULE

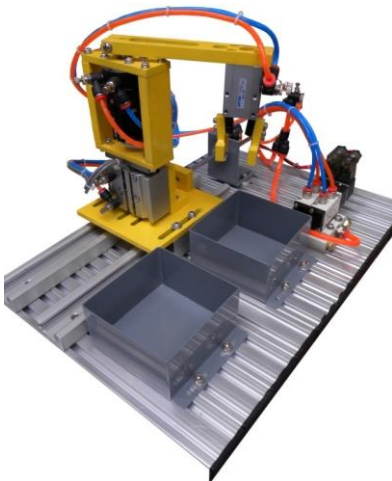
The module simulates the function of drilling the work piece. The PLC tells the vertically double acting flat cylinder to position the drilling device near the work piece and to start the drilling device.

The Drilling module is pneumatically operated with several main characteristics:

- Speed: 22000 RPM
- Compressed air flow: 4 CFM (Cubic Feet per minute)
- Work pressure:  $0.5 \div 0.8$  Mpa
- Connection Port:  $\frac{1}{4}$  inch

Lifting cylinder: 16 mm diameter & Stroke length 60mm

Fixed cylinder: 10 mm diameter & Stroke length 10mm.

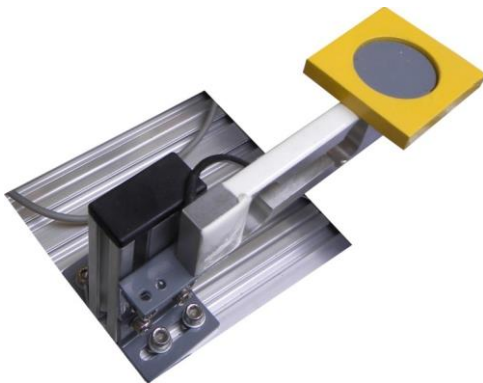


## UPLOADING ARM

The uploading arm or horizontal Pick & Place Unit is an electro-pneumatic system in which the movement is controlled by a linear and rotary actuator. This system works as a miniature pick and place robot with a limited path application.

The uploading arm is used to transfer the components or work pieces from one workstation to the other. It is pneumatically operated with main characteristics:

- Slide table drive cylinder: 10 mm diameter & stroke length 200 mm
- Lifting cylinder: 16 mm diameter & stroke length 20 mm
- Rotary cylinder:  $0 \div 180^\circ$
- Load Capacity: 0.5 kg.



## WEIGHING MODULE

The weighing module consists of two elements: the load cell and the interface circuit. The load cell generates a variable resistance value related to the weight of the object that is placed over it.

The interface circuit receives processes and sends this value to the analogue input of the PLC, which determines the correspondent weight of the work piece placed over the load cell.

The measuring principle: balance beam-single point weighing with:

- Rated load:  $0 \div 1$  kg
- Output:  $0 \div 10V$ .





**CIM**



Available only for the following models:

**DL CIM-BS\_7INCH**

**DL CIM-BS\_10INCH**



Available only for the following models:

**DL CIM-BS\_7INCH**

**DL CIM-BS\_10INCH**

### **HUMAN MACHINE INTERFACE (HMI)**

It is a computer based DCS and power automation monitoring system, which has a wide application area and can be used for data acquisition, supervisory and process controls, and it is the most widely used in power systems.

With this unit added to the system, the students can perform experiments commonly used in the industrial automation environment.

It has a high resolution and includes I/O interfaces such as Serial interface and Ethernet 10/100 base-T.

it is available in 7-inch or 10-inch

### **Supervisory Control And Data Acquisition (SCADA) software**

The system is supplied with **Supervisory Control And Data Acquisition (SCADA)** software and already installed in the HMI unit.

It occupies an important position in remote control systems and can monitor and control on-site operating equipment to achieve functions such as data acquisition, equipment control, measurement, parameter adjustment, and various signal alarms. It interfaces with the CIM's PLC.



## EXPERIMENTS DESCRIPTION

On the inspection area (a), the capacitive sensor detects metals, the inductive sensor distinguishes the difference between metals and plastic, and the photoelectric switch detects reflexivity of the object for correct positioning.

In the transfer area (b), electromagnetic (reed) sensors collect information regarding strokes of the horizontal rod less cylinder.

On the handling area (c), electromagnetic (reed) sensors detect correct positions of the arms during manipulations.

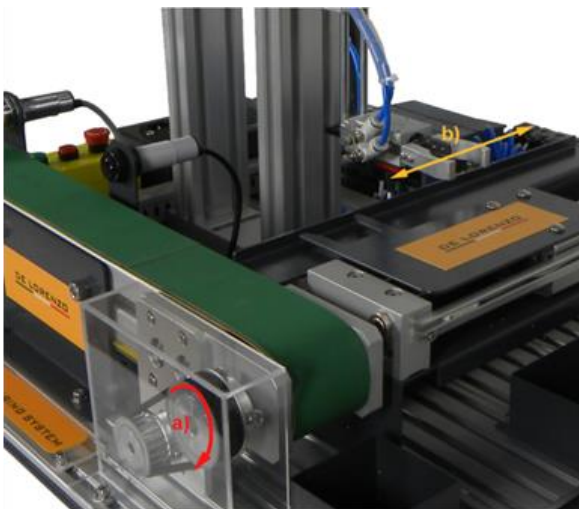
### Integration of the sensors in CIM experiments:

- **Capacitive proximity switch**
- **Inductive proximity switch**
- **Photoelectric switch**
- **Electromagnetic sensors**



### Integration and control of dedicated actuators experiments:

- **DC motor control**
- **Pneumatic cylinders control**



The DL CIM-B trainer offers an excellent possibility to study, understand, and design the most appropriate applications of a DC motor use (a). Simple, easy to control, with some proper gear, the application for belt conveyor is fast integration of this electric machine in manufacturing chain.

The pneumatic actuators, with their elasticity, offer best solutions for alternative linear displacements, and grippers. Together with its electric and pneumatic controlling accessories, and the use of PLC, these execution elements define and describe in an excellent form the mechatronics concept.

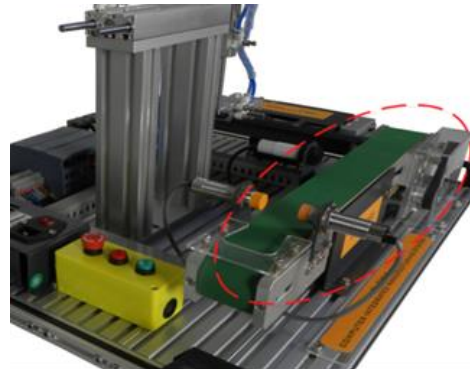
Through these experiments, the student/user can compare the possibilities of expansion for these actuators, following the main formulated functions for the manufacturing process design.



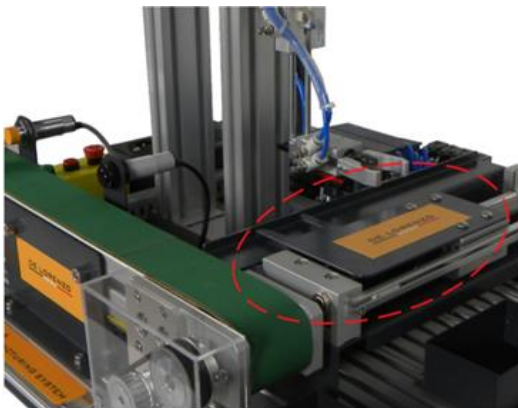
Around a PLC program, that integrates different kind of signals (detection whether has work piece, metal work piece detection, detection whether the work piece coming, START/STOP commands), it is built a linear transportation system, as manufacturing function.

Different kinds of working zones are identifiable: process controlling, inspection area, delivering point.

## **Substation functionality: Linear transfer unit experiment**



## **Substation functionality: Transfer unit experiment**



Around a PLC program, that integrates different kind of substation signals (linear transport cylinder stretch out detection, linear transport cylinder retract detection with upstream process signals and type of transported materials), it is built a transfer substation.

Through this experiment, we understand the operations sequence and dependencies of the material transportation and handling up to the moment of materials transferring substation.

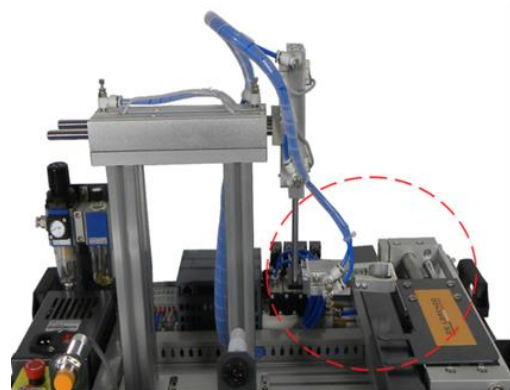
These understood and clarified handling constraints allow expanding solutions for many other classes of transported materials.

Around another PLC program, that integrates different kind of substation signals (horizontal cylinder stretch out detection, horizontal cylinder retract detection, vertical cylinder stretch out detection, vertical cylinder retract detection) with upstream process signals (related to availability of the materials), it is built this pick and place substation. The implementation and the control of the gripper is the core idea.

Through this experiment, we understand the operations sequence and dependencies of the material transportation and handling up to the moment of materials transferring substation.

These understood and clarified handling constraints allows expanding solutions for many other classes of transported materials.

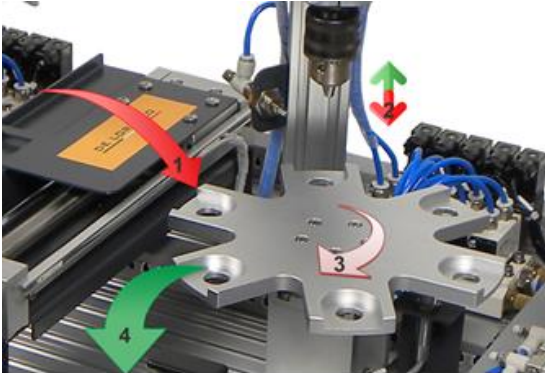
## **Substation functionality: Pick and place unit experiment**







## Six Stations Rotary Table Experiment



We study here an integrated motion system (motors, mechanical power transmission devices, encoders, sensors, and controllers). We underline the important parameters for rotary indexing tables (the needed resolution of the application, the required repeatability and accuracy, and other mechanical parameters such as acceptable levels of backlash or hysteresis).

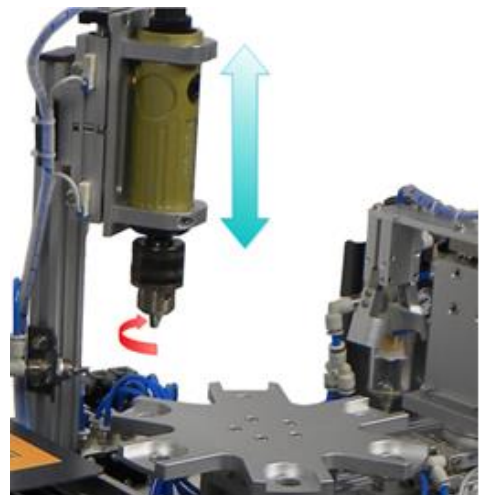
Another key parameter is the loading including torque, axial, radial, and moment loads. These can impact the type and size of the indexer used in each application - probably it is the most important element in the production chain (four major interconnected operations: 1- 4).

A rotary indexing table can be used in many applications including manufacturing, inspection, and assembly tasks

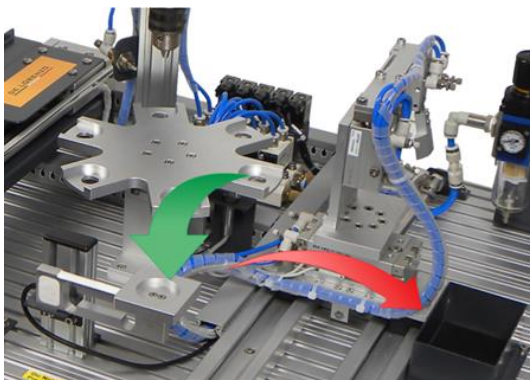
Hole drilling operation using an elastic driving system (pneumatically operated) offers the possibility to observe, understand, and design later, the main operations: connecting the air source output port of the compressor to the air source input, turning the pressure regulating valve, the drilling control, till the ending operation. It is an application and technique that utilizes high pressure to obtain a mechanical movement.

As for many other machine tools used in industrial processes, this station is equipped with standard control (manual or automated, emergency actions). At the same time, we underline some major advantages: safe, robust, powerful, long lasting, easy to maintain.

## Drilling Module Experiment



## Uploading Arm and Weighing Module Experiment

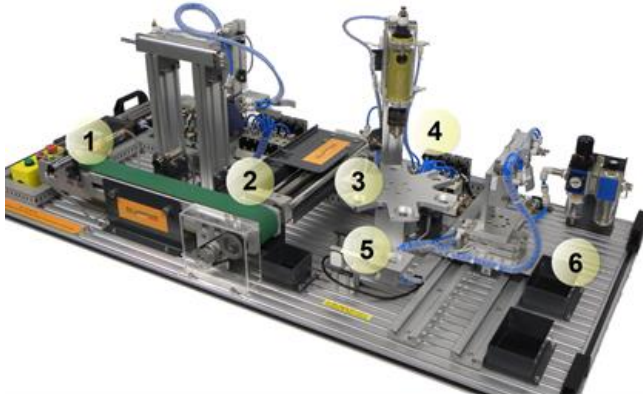


A simple and robust decision maker algorithm has been implemented in DL CIM-B based on the weight of the work pieces.

The uploading arm is controlled for selecting pieces of work, in a programmed operations sequence. During the experimenting time, the automation of the uploading process is tested as a concept.



## Integration of the substations: CIM experiment



The DL CIM-B trainer offers excellent possibility to study, understand, and design the most proper applications where particular substations are implemented to work together.

The experiment is mostly focused on sequential execution of different manufacturing operations:

1. reception, loading and first inspection, then transporting materials according with the processes flow,
2. selection point according with inspection algorithms,
3. locating on rotary index for repetitive operations,
4. example of technological process (drilling machine),
5. selection point according with another specific criteria (weight),
6. output selection and preparation for expedition).

One time we understand the main operations of defined manufacturing system, the success of using this trainer would be the measure of expansion, or customization according to local requirements.

In actual implementation, the PLC sub-programs are working in CIM experiment, like program routines that allow easy understanding of the programming manner.