

LABO 520 CR-HF PRO-ACTIVE

Cleanroom Refrigerator according to DIN 13277

Equipment

- Stainless steel housing
- With HEPA filter
- Key switch
- Minimum/maximum temperature memory
- Visual and acoustic alarm signal, even in the event of a power failure
- Forced-air cooling
- Automatic rapid defrosting
- 5 grids
- Convenient access
- Freeze protection
- Equipped with castors
- Potential-free contact
- Cable gland

**MADE IN
GERMANY**



PRO-ACTIVE-Features

- Faster response time in the event of impending faults thanks to proactive alarms
- Data recording can be read out via USB interface using a USB stick and software
- Minimisation of temperature deviations in the interior
- Maximum storage safety thanks to harmonised components



The ideal cleanroom solution

- **No on-site costs**
(for enclosure of the unit or extraction system)
- **Class A (GMP) certified**
- **HEPA filter** (removes 99.95% of particles)
- **Stainless steel outer housing**
- **Condensation tray** (for manual emptying)
- **Disinfectant resistance tested**
(cleaning recommendation according to instructions for use)

We are happy to assist you!

As every cleanroom has its own special features, comprehensive specialist advice should always precede the purchase of a refrigerator to be installed in it. Get in touch with us. We will be happy to offer you a project-specific and customised solution for your cleanroom.

info@kirsch-medical.de
+49 (0)781 - 9227 0



HEPA filter
Enables operation in cleanrooms.



Standalone Solution
No external extraction system required.

Zertifikat

We hereby certify that the Refrigerator Type

- MED 520-720 Pro Active + Ultimate
- BL 520-720 Pro Active + Ultimate
- LABO 520-720 Pro Active + Ultimate
- LABEX 520-720 Pro Active + Ultimate
- LABO 720 CHROMAT Pro Active + Ultimate

Are manufactured according to the standards of

- GMP-Regulations and the
- Clean Room Suitability (ISO 14644)

The type test produced the following results:

- The materials used are cleanroom compliant and so far disinfectant resistant.
- Cleanability in relation to GMP criteria is given.
- For particle retention of the active air flowing through the cooling units they are equipped with a HEPA filter (manufactured and tested according to DIN EN 1822) and are installed in accordance with the work instructions.
- In the particle analyses (0,5 and 5 μm), fewer particles than the limits in ISO 5 / CLASS A (GMP) were detected.

Leinfelden, 22nd January 2024

Managing Director: Th. von Kahlden



CCI - von Kahlden GmbH
Maybachstrasse 9
70771 Leinfelden

Internet: www.cci-vk.de
E-Mail: Info@cci-vk.de
Telefon: +49(0)711 699 767-0

von Kahl

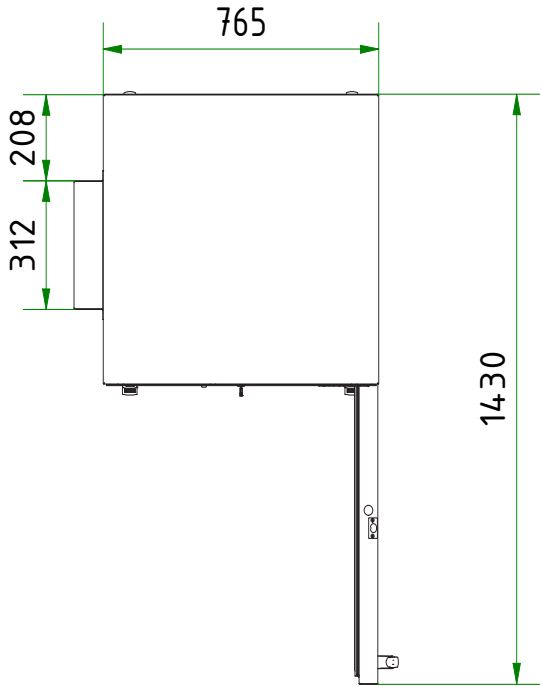
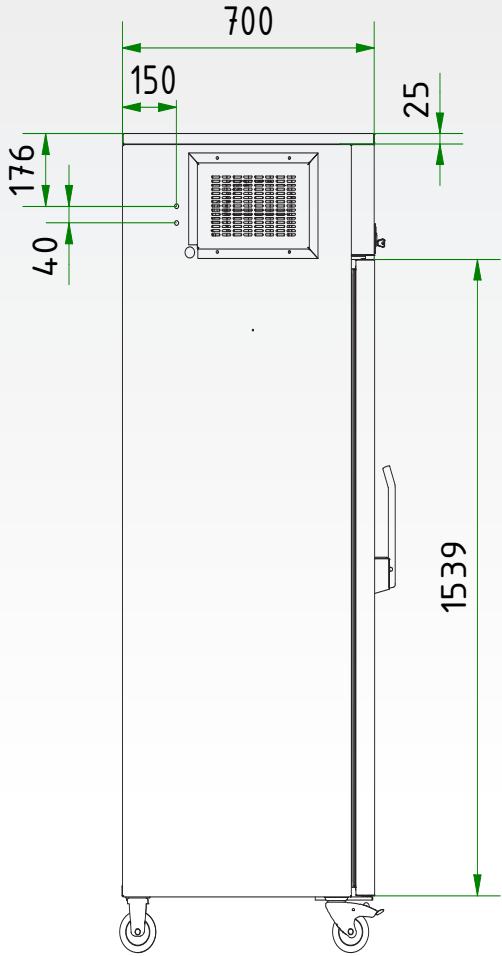
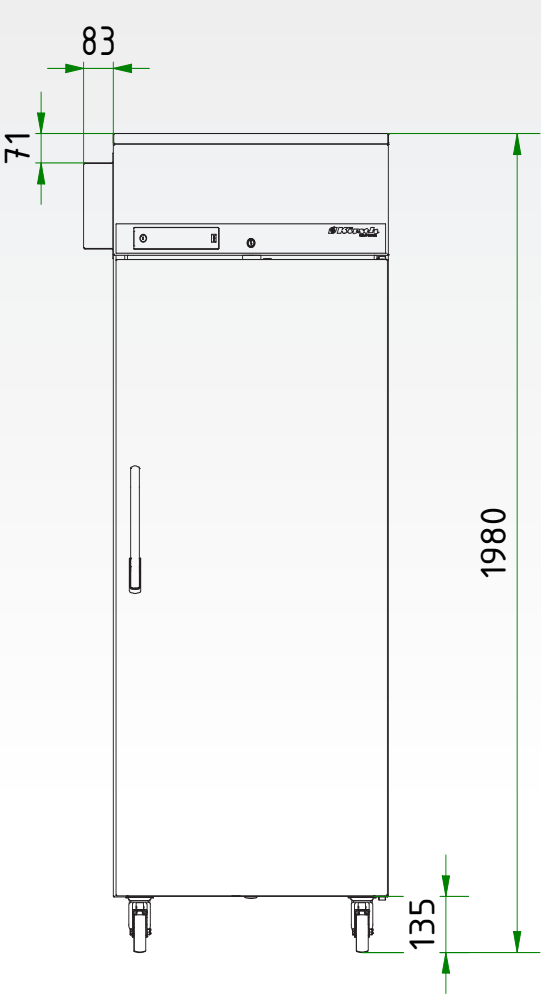
- **PRO-ACTIVE-Control:** Permanent, proactive monitoring of the performance data and alerts in the case of deviations. World's most accurate temperature control in refrigerated areas thanks to two standard PT-1000 sensors.
- **External housing** made from galvanised sheet steel (rustproof), with white, anti-scratch powder coating. Length of the plug cable: approx. 2,8 m.
- **Equipped with castors.**
- **Interior** can be customised (surcharge may apply). See optional equipment.
- **Interior made from** smooth aluminium with colourless protective coating. Gibs (every 15 mm) for flexible interior arrangement.
- **Cable gland** for inserting an external sensor (diameter 8.5 mm).
- **Extra-thick insulation**, made from high-quality, compression-moulded and environmentally friendly material. Energy saving.
- **Self-Closing Door** with easy-to-replace plastic magnetic seal frame, lockable.
- **Door hinge** on the right-hand side (by default, see illustration), or the left-hand side, can be retrofitted.
- **Forced-air cooling**, switches off automatically when you open the door, ensures a uniform temperature and minimizes temperature deviations.

- **Automatic defrosting** with thermal monitoring and time limit.
- **Condensation tray** for manual emptying.
- **Key switch** protected control panel against tampering. Membrane keyboard with digital temperature display and minimum/maximum temperature memory.
- **Warning functions** with visual and audible alarm signal in the case of temperature deviations or other malfunctions. Door open alarm after 60 seconds.
- **Power failure alarm** (visual and audible alarm), the monitoring unit remains in operation for approx. 30 hours on battery power.
- **Alarms** can be forwarded via email or SMS using the Kirsch EVOLUTION CLOUD Module (optional).
- **Data documentation** can be read via USB interface with KIRSCH Datanet software.
- **Antifreeze** against sub-zero temperatures.
- **Ventilation-enforced refrigerating machine**, hermetically sealed, energy saving, low noise, easy to service.
- **Quiet fan** reduces noise emissions.

Technische Details

Capacity	500 litres
Temperature setting	approx. +2 °C to +15 °C
Voltage	220 – 240 V, 50 Hz
Power consumption	250 watts
Normal consumption	1.4 kWh/24 h
Admissible ambient temperature	from +10 °C to +38 °C
Heat emission (max.)	553 watts
Exterior dimensions (including door handle and distance from wall)	w x d x h = 77 x 76 x 195.5 cm *
Useable dimensions	w x d x h = 59 x 45 x 129 cm
Exterior dimensions with door open at 90°	w x d = 74 x 144 cm
Grid	w x d = 59 x 45 cm
Max. load grid	40 kg
Weight (net./gross)	120 kg/148 kg
Temperature deviation	+/-0.5 °C
Noise emission	42 dB(A)

*83 mm wider (HEPA filter)



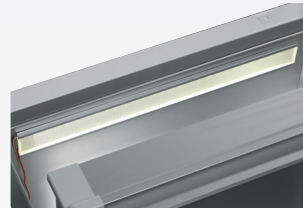
Optional equipment

KIRSCH refrigerators and freezers offer numerous equipment options that can be retrofitted.



Glass door with lock

Transparency: avoid opening the door unnecessarily to inspect the contents. Lockable.



interior lighting, side wall

Optimal and energy-efficient lighting for the interior using an LED lightstrip.



Additional length and cross dividers

for the optimum organisation of your refrigerated goods.



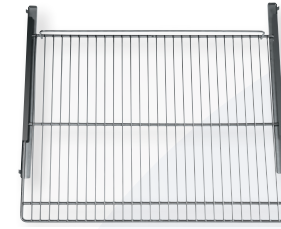
Drawers on runners

Up to twelve drawers are possible in total.



Vario Support

Storage shelf on roller runners.



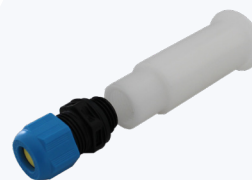
Additional Shelves

Wire shelves, robust with load capacity up to 40 and 50 kg.



Levelling feet

Levelling feet instead of castors.



Access Port

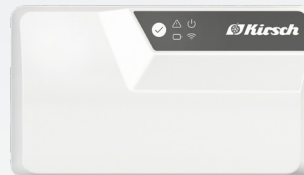
Simple insertion of an external temperature sensor with integrated cable feed-through.

Equipment for temperature documentation



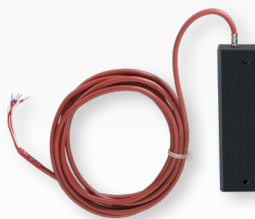
PC-KIT-NET

Automatic temperature documentation and monitoring via your network (LAN connection).



KIRSCH EVOLUTION CLOUD-Module

Maximum storage safety through optimal connectivity and real-time monitoring. *



External PT100/PT1000 with cold block

Additional temperature sensor for connection to existing/external monitoring system.

* For more information about our cloud, please contact us.

Philipp Kirsch GmbH

Im Lossenfeld 14
77731 Willstätt

Telefon: +49 (0) 781 9227-0
Telefax: +49 (0) 781 9227-200
info@kirsch-medical.de

www.kirsch-medical.de



Unsere gesamte Produktübersicht finden Sie auf unserer Webseite:
www.kirsch-medical.de