

R140

FLAG ALARM RELAY

FOR D.C. OR A.C. SUPPLY OPERATING ON "PICK-UP" OR "RESET"

DESCRIPTION

The R140 relay is particularly sturdy and compact and comprises an electromagnet which triggers three switching contacts plus a three-position, three-colour flag alarm which triggers another two switching contacts.

The electromagnet, contacts, signal mechanism and flag alarm are contained in a metal housing with a front panel and a rear terminal block for coupling the connections.

The front panel has a glass window for viewing the three signals and a push-button for resetting the device.

There are two types of relay, for on "pick-up" (E) or "reset" (D) operation, and they come in the following versions:

- flush-mounted, removable, with screw couplings (EB-DB);
- flush-mounted, fixed, with microfaston couplings (E-D);
- projecting, removable, with rear screw couplings (ES-DS).

OPERATION

Version "EB"- "E"- "ES" for "pick-up" operation

In the normal position (with the relay de-energized) the colour of the flag is BLACK.

When the electromagnet coil is powered, the RED flag appears.

- The three electromagnet contacts switch over and remain in the new position for as long as the electromagnet remains energized.
- The two flag alarm contacts switch over.

On pressing the push-button, the WHITE flag appears and the two flag alarm contacts return to their original position.

On releasing the push-button, the BLACK flag returns if the electromagnet is deenergized; if it is still energized, the WHITE signal remains until the electromagnet is deenergized.

Versions "DB" - "D" - "DS" for "reset" operation

In the normal position (with the relay energized) the colour of the flag is BLACK.

When the electromagnet coil is not being powered, the RED flag appears.

- The three electromagnet contacts switch over and remain in the new position for as long as the electromagnet remains deenergized.
- The two flag alarm contacts switch over.

On pressing the push-button, the WHITE flag appears and the two flag alarm contacts return to their original position.

On releasing the push-button, the BLACK flag returns if the electromagnet is energized; if it is still de energized, the WHITE signal remains until the electromagnet is energized.

FEATURES

Operating time: 25 ms

Contacts

Carry continuously: 5 A

Break (100.000 operations):

0.35 A at 110 Vdc L/R=40ms

Make and carry for 0.5 s:

30 A at 110 Vdc

Power supply

Normal voltages:

in a.c. 24 - 48 - 110 - 125 - 220 - 380 V

in d.c. 12 - 24 - 48 - 110 - 125 - 220 V

Rated range: -20% +20%

On request, the R140 relay is also available in an amperometric version, in which case the duration of the energizing current impulse must be no less than 15ms.

Dielectric test voltage

Applied between all the terminals and earth, and between any two independent circuit:

2 kV, 50 Hz for 1 minute

5 kV peak, 1.2/50 ms, 0.5 J

Burden

In a.c. at 50 Hz:

4.5 VA

In d.c.:

4 W

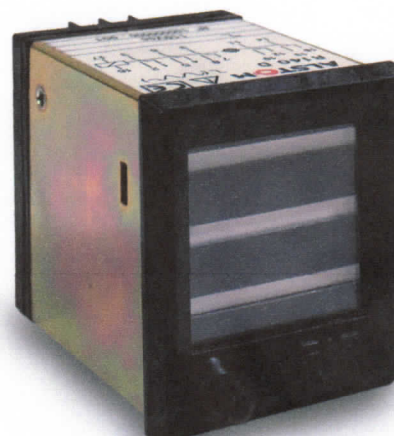
Ordering information

Power supply voltage:

e.g. 110 Vdc

Version:

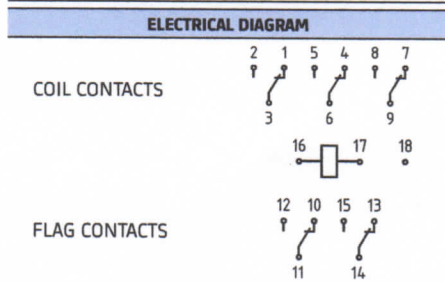
e.g. "DS"



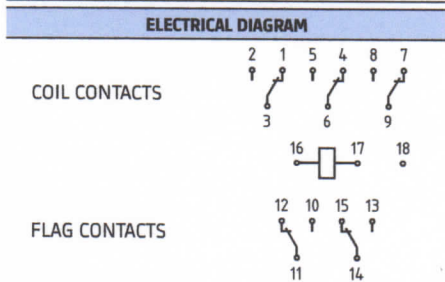
SIGNALING	
COLOUR	INDICATION
BLACK	NORMAL
RED	ALARM
WHITE	ADVICE

I = CLOSED O = OPEN

TYPE AT ENERGIZING	
SIGNALING	CONTACTS POSITION
COLOUR	3-2 3-1 6-5 11-12 11-10 6-4 9-8 9-7 14-15 14-13
BLACK	O I O I DEENERGIZED COIL
RED	I O I O ENERGIZED COIL
WHITE	I O O I ENERGIZED COIL

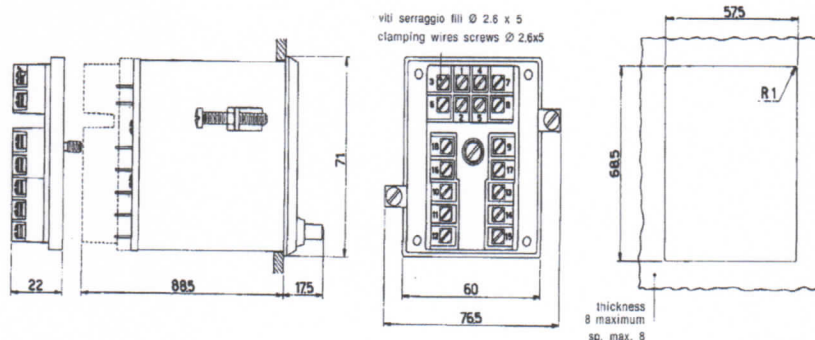


TYPE AT DEENERGIZING	
SIGNALING	CONTACTS POSITION
COLOUR	3-2 3-1 6-5 11-12 11-10 6-4 9-8 9-7 14-15 14-13
BLACK	I O O I ENERGIZED COIL
RED	O I I O DEENERGIZED COIL
WHITE	O I O I DEENERGIZED COIL

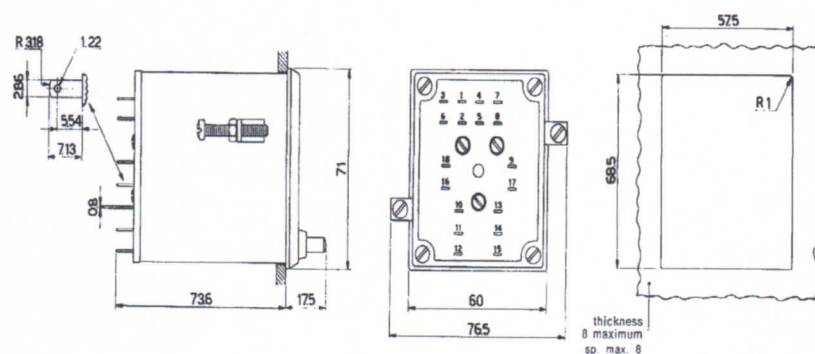


EXECUTIONS, OVERALL DIMENSIONS AND DRILLING PLAN

EXECUTION WITH BASE TYPES «EB-DB»



EXECUTION WITHOUT BASE TYPES «E-D»



PROJECTING EXECUTION TYPES «ES-DS»

