

THROTTLE ASSEMBLY

MODEL WP-45



CURTIS



DESCRIPTION

Model WP 45 is a 0-5k Ω wigwag throttle which provides an output for motion in both directions. The conductive plastic element in conjunction with unique wiper and shaft support design provides a durable throttle with longer mechanical cycle life.

APPLICATION

Curtis Model WP 45 is specifically designed for mobility aids applications which utilize a wig-wag throttle.

ORDER CODES

| Type | Output Voltage Range | Spring Torque | Part No. |
|---------|----------------------|------------------|----------|
| WP 4504 | <20%...>80%Vs | 20Ncm \pm 3Ncm | 15945704 |
| WP 4505 | <5%...>95%Vs | 20Ncm \pm 3Ncm | 15945701 |
| WP 4506 | <20%...>80%Vs | 33Ncm \pm 3Ncm | 15945702 |
| WP 4507 | <5%...>95%Vs | 33Ncm \pm 3Ncm | 15945703 |

FEATURES

- Long cycle life (>3,000,000)
- Self contained & compact package
- Easy mechanical installation
- Easy electrical connections
- No mechanical adjustments
- No electrical calibrations
- Easy actuating lever orientation
- Positive actuating lever attachment
- Easy field replacement.

ELECTRICAL CHARACTERISTICS

- Resistance value, Rtot: 5k Ω
- Resistance tolerance: \pm 10%
- Output Voltage Range: see order codes below
- Wiper mid position: 1/2 Vs \pm 3%
- Insulation resistance: 1000 M Ω
- Dielectric strength: 500 V DC
- Power dissipation: 0.2 W at 40°C
- Maximum supply voltage Vs: 30 VDC
- Maximum wiper current: 1 mA
- Recommended wiper current: <10 μ A
- End resistance: 2x1k Ω (WP4504 & 4506)

MECHANICAL CHARACTERISTICS

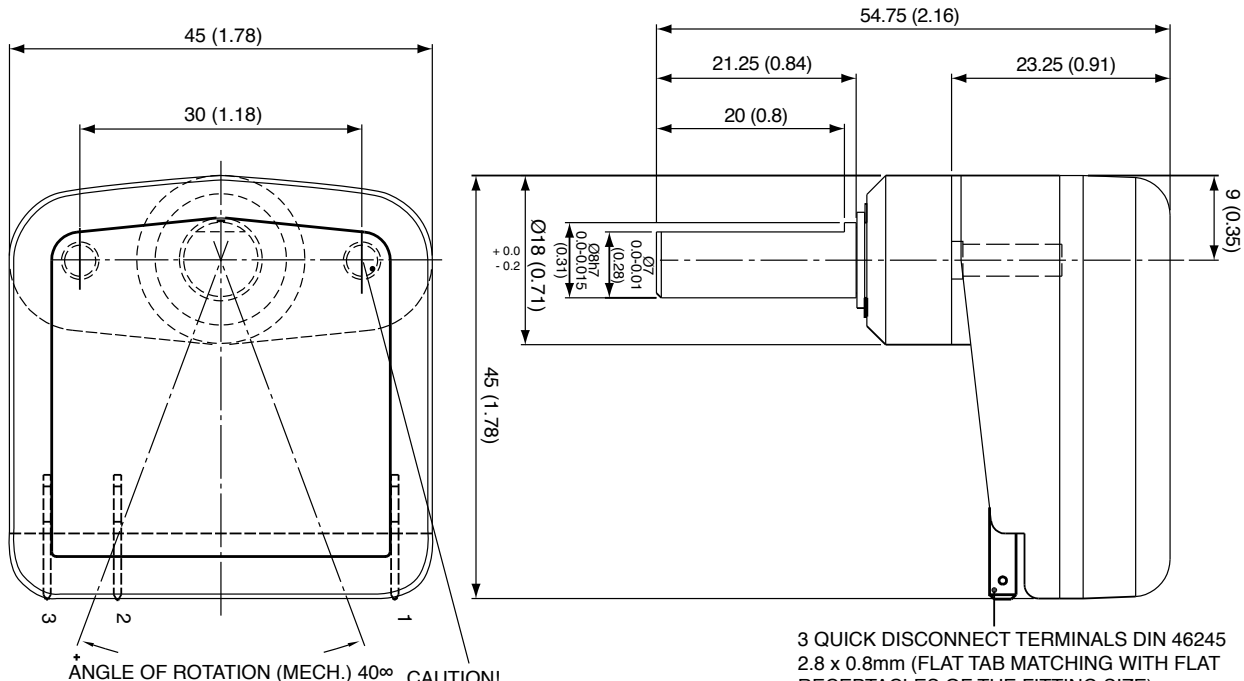
- Mechanical angle: \pm 20° (40° in total)
- Lifetime: 3 million movements
- Torque out of the center position: see order codes
- End stop maximum: 300Ncm
- Shaft load Axial: max. 100g
- Mass: 50g

ENVIRONMENTAL SPECIFICATIONS

- Temperature range: -25 to +75 degrees °C

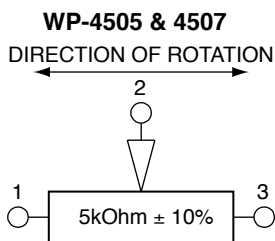
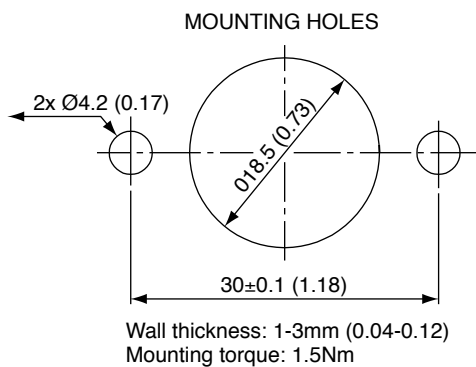
MODEL WP-45

DIMENSIONS mm (in)



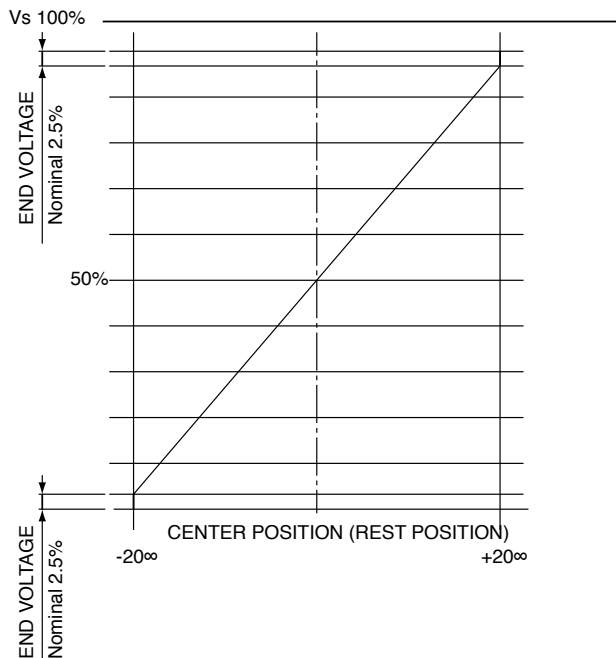
CAUTION!
FIXATION SHOULD BE MADE WITH
DELIVERED SELF TAPPING PT-SCREWS WN1412 K 40,
LENGTH 12mm (0.47), INOX MAX. PENETRATING DEPTH: 7.5mm (0.30)
BOSSARD INT. INC. STD. BN 13579

MOUNTING DIMENSIONS mm (in)



VOLTAGE OUTPUT

OUTPUT VOLTAGE VERSUS ANGLE OF ROTATION (WP4505 & 4507)



PREFERRED MOUNTING ORIENTATION

Shaft vertical pointing down.

WARRANTY Two Year Limited Warranty from time of delivery.



is a trademark of Curtis Instruments, Inc.

Specifications subject to change without notice

©2008 Curtis Instruments, Inc.

50064 REV C 10/08